

Isticmaalka Xarafka Tile ee Ciyaara bilaash ah si aad ugu tababarato ereyada afafka

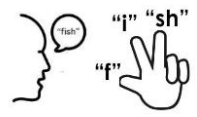


[Xarafka Tile Ciyaar bilaash ah](#) waxaa laga heli karaa mareegta Really Great Reading ee hoos timaada qaybta Isku Home Connection. Kheyraadkan waxaa loo isticmaali karaa in lagu dhaqmo ereyada afafka iyadoo la is waafajinayo xarfaha iyo codkooda si loo higgadiyo.

Habraaca

1. Marka hore, u sheeg ilmahaaga ereyga: "fish" (Haddii aad rabto in aad ogaato macnaha ereyga, waxaad ka fiirin kartaa shabakadda internetka, Google-ka, iwm.)

Markaas ayaa ilmahaagu isku qasayaa codad uu ku samaysto ereyga. Fasal ahaan, waxaa loo isticmaalaa inay ereyga ku dhawaaqaan, ka dibna ay farta ku fidiyaan cod kasta oo ay ereyga ka maqlaan, kadib marka ay ku celiyaan.



"fish" waxuu leeyahay saddex dhawaaq: / f / / i / / sh /

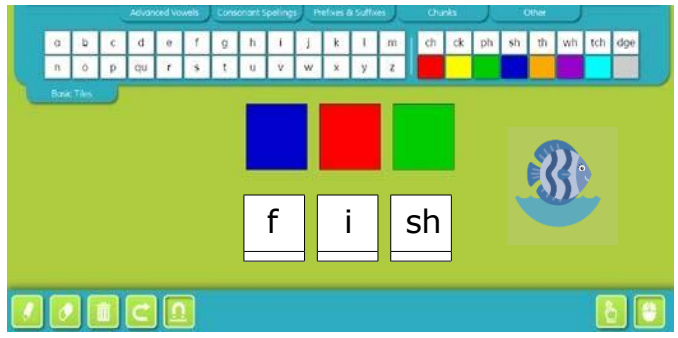
2. Afargeesood oo midab leh ayaa matalaya cod kasta oo laga maqlay ereyga. Ilmahaaga ayaa sanduuq midab leh hoos u jidi doona si uu ugu dhigmo cadadka dhawaaqa uu maqlayo. Sida caadiga ah waxaan u isticmaalnaa sanduuqa casaanka ah si aan ugu metelno dhawaaqa dabaqada oo ereyga laga maqlayo.

3. Marka xigta, ilmahaagu hoos ayuu u jidi doonaa xaraf kasta oo ay ku qorantahay cod kasta si uu ugu higgadsho ereyga ay maqleen, sidaan oo kale:



[reallygreatreading.com/homeconnection](https://www.reallygreatreading.com/homeconnection)

Si aad wax badan uga barato sida loo aqoonsado oo loo tiriyo dhawaaqyada ereyada, eeg koorasyadeena yaryar ee waalidiinta, kuwaas oo aad ka heli karto websaydka English Learner Home Connection.
<https://www.reallygreatreading.com/el-home-connection>



Mar marka qaarkood, hal dhawaaq ayaa la abuuraa iyada oo la isku darayo xarfo badan, tusaale ahaan: "sh" waxa uu leeyahay laba xaraf, balse hal cod ayay sameeyaan. Waa sida "sh/" oo ah Soomali. Sida ereyada "shaah" (Tea) ama "shaambad" (stamp) waxay leedahay laba xaraf, balse waxay hal cod ka soo saarid: "sh". Sanduuqyada midabka leh waxay ka dhigan yihiin hal cod, xarfaha hoosena waxay ka tarjumayaan ereyga qayb ka mid ah codadkaas

Tusaalooyinka Ereyada Kale

Higaada saxda ah ee micnaha erayga

thin		Khadku ma ahayn mid dhumuc weyn, waxa uu ahaa "mid thin ". (thin)
shell		Waxa aanu raadineynaa " shell " xeebta ku dhacda. (seashells)
bring		Ha illoobin inaad " bring " hadiyad xafalada. (bring)
heard		Waxaan " heard " waad xanuunsatay. (I heard)
stood		Geesiga " stood " isagoo faanaya. (stood up)

SAMEYNTA WARQADA TILE

			*Sanduuqyada xarfaha 'll' waxayku hoos jiraan ikhtiyaarka Higaada shibbanayaasha ee Xarafka Tile Ciyaar bilaash ah.	
			* Sanduuqyada isku xigxiga xarfaha 'ing' waxaa laga heli karaa hoosta ikhtiyaarka Chunks-ka in Xarafka Tile Ciyaar bilaash ah.	
			* Sanduuqyada taxanaha xarfaha 'dheg' waxaa laga heli karaa shaqallada sare ee Xarafka Tile Ciyaar bilaash ah.	
				* Sanduuqyada isku xigxiga xarfaha 'oo' waxa laga heli karaa shaqallada sare ee gudaha Xarafka Tile Ciyaar bilaash ah.

Isticmaal erayada barnaamijka wax barida ee ilmahaaga si aad ugu tababarato.